

L-Series AM-1RU Sliding Patch Panel



Description

The L-Series 1RU sliding patch panel with a smoked acrylic glass hinged front door has been designed to accept up to 3 L-Series Adapter Plates or MPO Cassettes for a maximum density of 72f when using an LC presentation. With a range of adapter types, this panel offers flexibility to the end-user, allowing easy access during installation or reconfiguration with no disturbance of the existing cable or fibers. The panel also offers multiple cable entry solutions:

- MPO trunk cables connected to 3 individual MPO cassettes with up to 24 fibers in each
- Loose tube cable to be spliced into standard splice cassettes to allow standard splicing
- Pre-terminated solutions

The versatility of the L-Series AM-1RU Sliding Patch Panel makes it one of the most flexible solutions on the market. The AFL Hyperscale L-Series is compatible with the industry-standard LGX format.

Features and Benefits

- Up to 3 L-Series Cassettes in 1RU for a maximum density of 72f when using an LC presentation.
- Multiple adapter options available
- Sliding tray for ease of installation
- Side patch cord exit
- 19" and 23" rack-mountable
- Accepts loose tube, distribution, and MPO trunk cable
- Integrated spring-loaded tray stop
- Hinged front acrylic glass door and a removable top cover

- Materials are RoHS, REACH, and SVHC compliant

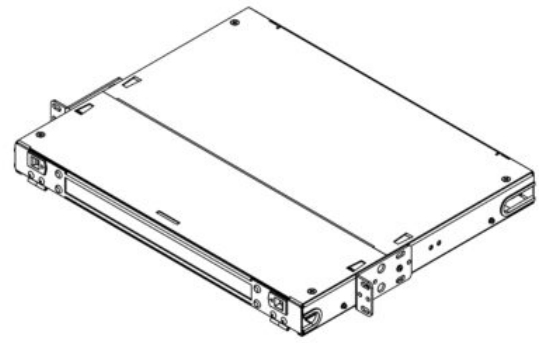
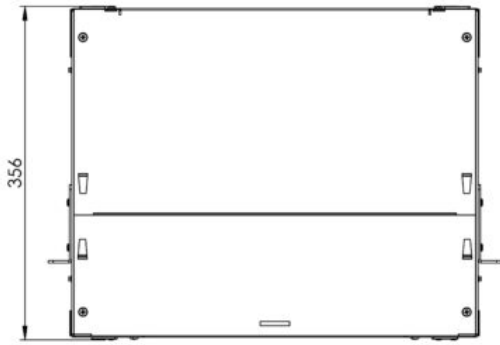
Applications

- Data centers, premise installations, telecommunication networks
- Indoor applications
- Ethernet, Fiber Channel, ATM, LAN, MAN, and WAN

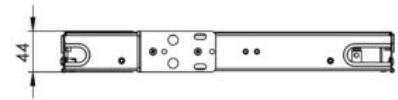
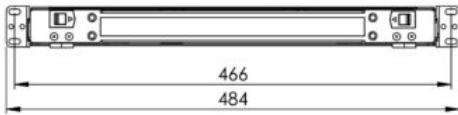
Specifications

1RU MODULAR PATCH PANEL CHASSIS	
Height	1RU (44.4mm)
Width	432mm
Depth	356mm
Net weight	5.9kg
Packaged weight	6.3kg
Packaged dimensions	444mm (W) x 508mm (L) x 102mm (H)
IP rating	IP 20
Suitable for adapter type	L-Series Adapter Plates / MPO Cassettes
Number of ports	3
Material	Cold-rolled steel
Material coating	Powder coating
Material thickness	1.2mm
Color	Black
Operating temperature	-40°C to +60°C
Designed in accordance with	TIA/EIA 568.C, ISO/IEC 11801, EN50173, IEC60304, IEC61754,
Materials compliant to	RoHS, Reach, SVHC

Technical Drawing



Isometric View



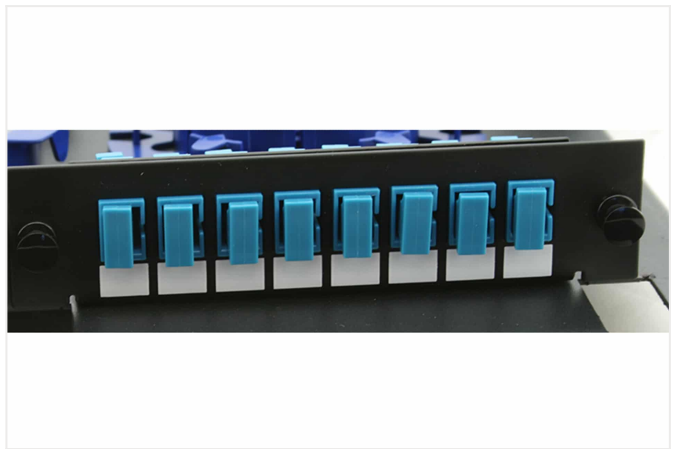
Ordering Information

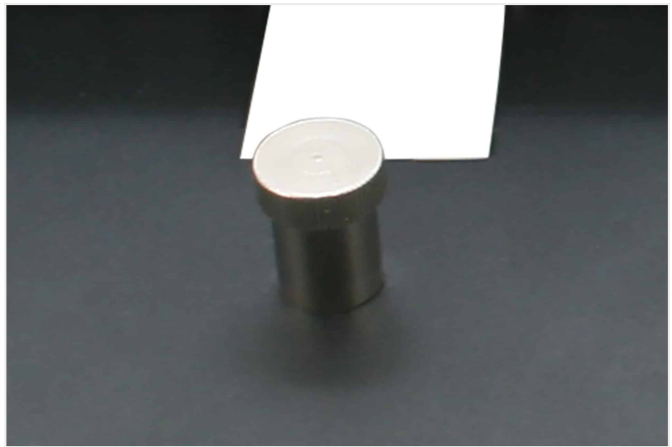
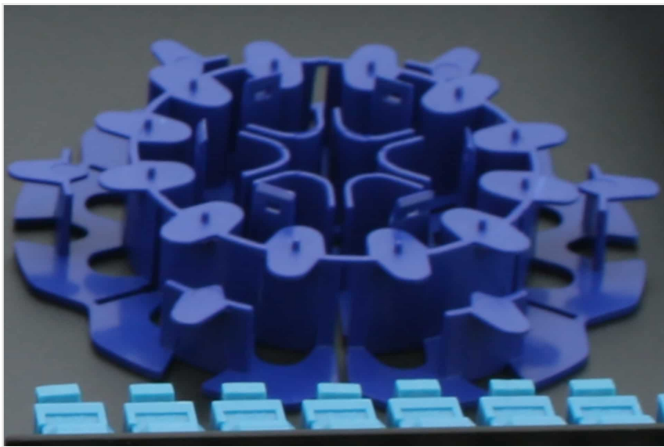
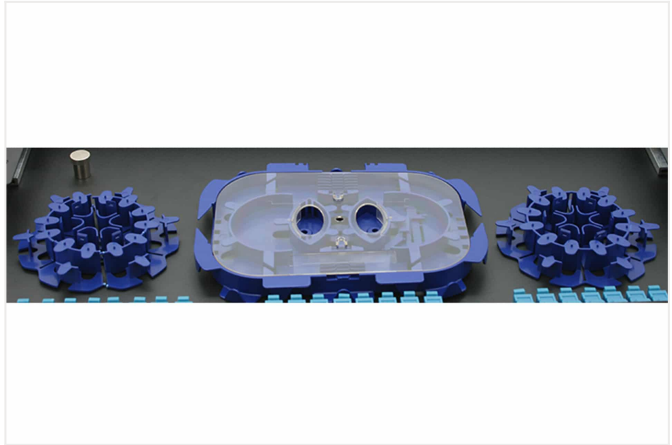
PART NUMBER	DESCRIPTION	LEGACY PART NUMBER
FXLCXXBXXX-01AB	AFL Hyperscale L-Series LGX Sliding Panel AM Style 1RU for 3 LGX Cassettes Splice Trays Black	AM1U

Regional Availability

USA	EMEA	INDIA	APAC (excluding India)
+1-866-814-8615 usasales@afllhyperscale.com	+44 1908 441 144 emeasales@afllhyperscale.com	+91 80 46874687 indiasales@afllhyperscale.com	+86 755 2561 3694 apacsales@afllhyperscale.com

Additional Images





Related Products

