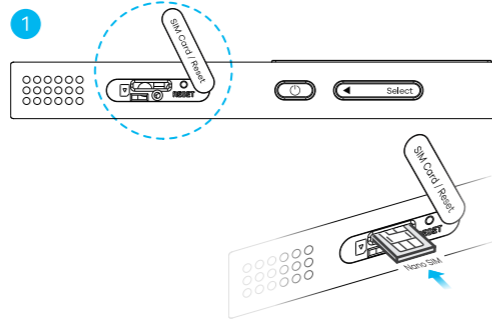




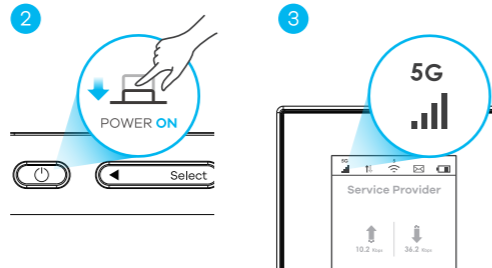
## Quick Start Guide

ENGLISH

### 1 Hardware Installation

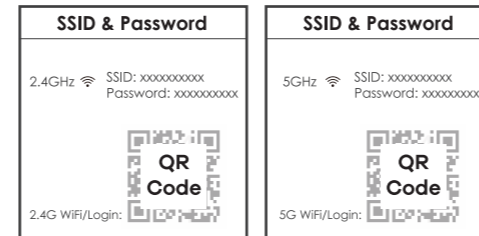


### 2 Check Internet Connection

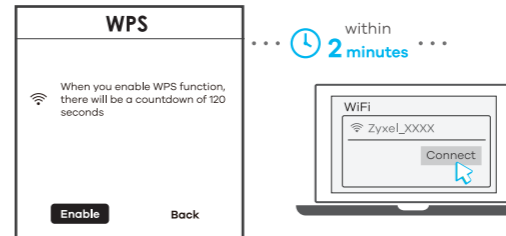


### 3 Connecting to the Zyxel Device

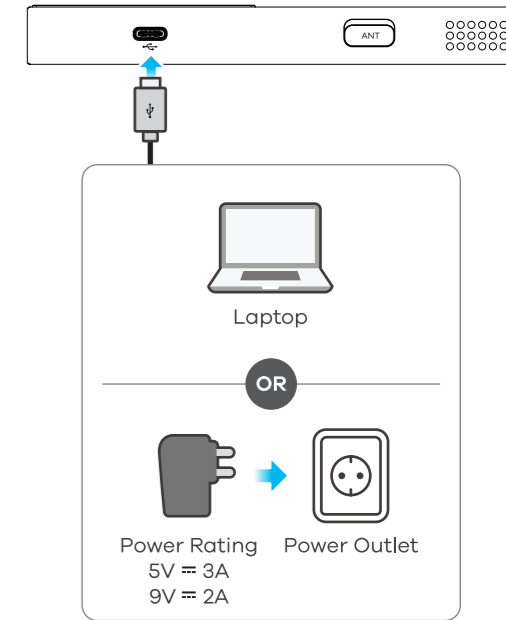
#### 4-a Using SSID



#### 4-b Using WPS



### Charge Your Zyxel Device



### Package Contents



### Support Information

📄 <https://service-provider.zyxel.com/global/en/tech-support>



- EN** ① Remove the lid. Gently place the Nano SIM card into the SIM Card slot. Close the Zyxel Device with the lid.
- ② Press the **Power** button and release it when the screen turns on.
- ③ Check if the Zyxel Device has successfully connected to the mobile network.
- Note:** Your SIM card should have an active mobile data plan.

- EN** ④-a To connect to the Zyxel Device using the SSID, go to **Menu**, then go to **SSID & Password** and finally press the **Confirm** button on the side. From the WiFi client find this **SSID** and enter the **Password**.

- EN** ④-b To connect to the Zyxel Device using WPS, go to **Menu**, then go to **WPS** and finally press the **Confirm** button on the side. Press the WPS button on your WiFi client within 120 seconds, if required.

- EN** Use a power adapter to connect the Zyxel Device to a power outlet or a computer's USB port.

See the User's Guide at [www.zyxel.com](http://www.zyxel.com) for more information, including customer support and safety warnings.

#### EU Importer

Zyxel Communications A/S  
Gladsaxevej 378, 2. th. 2860 Søborg, Denmark  
<https://www.zyxel.com/dk/da/>

#### UK Importer

Zyxel Communications UK Ltd.  
2 Old Row Court, Rose Street, Wokingham,  
RG40 1XZ, United Kingdom (UK)  
<https://www.zyxel.com/uk/en>