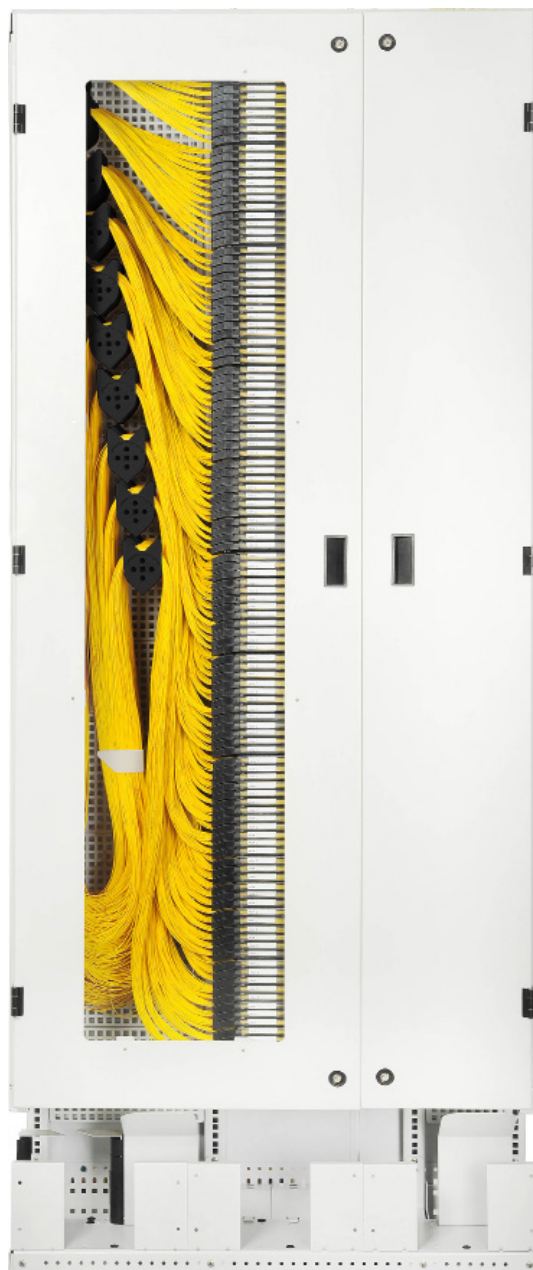


Installation instructions

Issue 2, June 2015

Centrix cabinet

These installation instructions are provided as guidance for the trained craftsperson carrying out the installation.



Contents

1. Centrix frame assembly
2. Mounting backplates installation in the Centrix cabinet.
3. Fixing cabinet to the floor
4. Centrix housing installation in the Centrix cabinet.
5. Stacking cable hubs together.
6. Cable hubs installation in the Centrix cabinet.
7. Feeder cables installation in the Centrix cabinet
8. Grounding for cable with metal sheath
9. Guiding transport tubes with optical fibers to Centrix cassette.
10. Patchcords management

Warning!

Laser/LED radiation in the non-visible spectrum possible!

If the degree of hazard of the laser/LED radiation is not known, on no account look into open fiber ends.

Caution

The assigned degree of hazard is for the constructor/operator of the communication equipment to finally determine and to responsibly indicate (e.g. by affixing standards-compliant warning labels as per DIN EN /IEC 60825-1, current issue, by compliance with BGV B2 "Laser Radiation", current issue).

If the technical data should change in a way that affects the degree of hazard, the warnings must if necessary be amended accordingly and work safety precautions must be taken, see also e.g. DIN EN/IEC 60825-2, current issue.

Tools required (not included):

Philips screwdriver



Marker



Wrench No 13



Kits included:

Main kit:

26x



26x



10x



10x



Cabinet connection kit:

2x



2x



2x



4x



2x



4x



2x

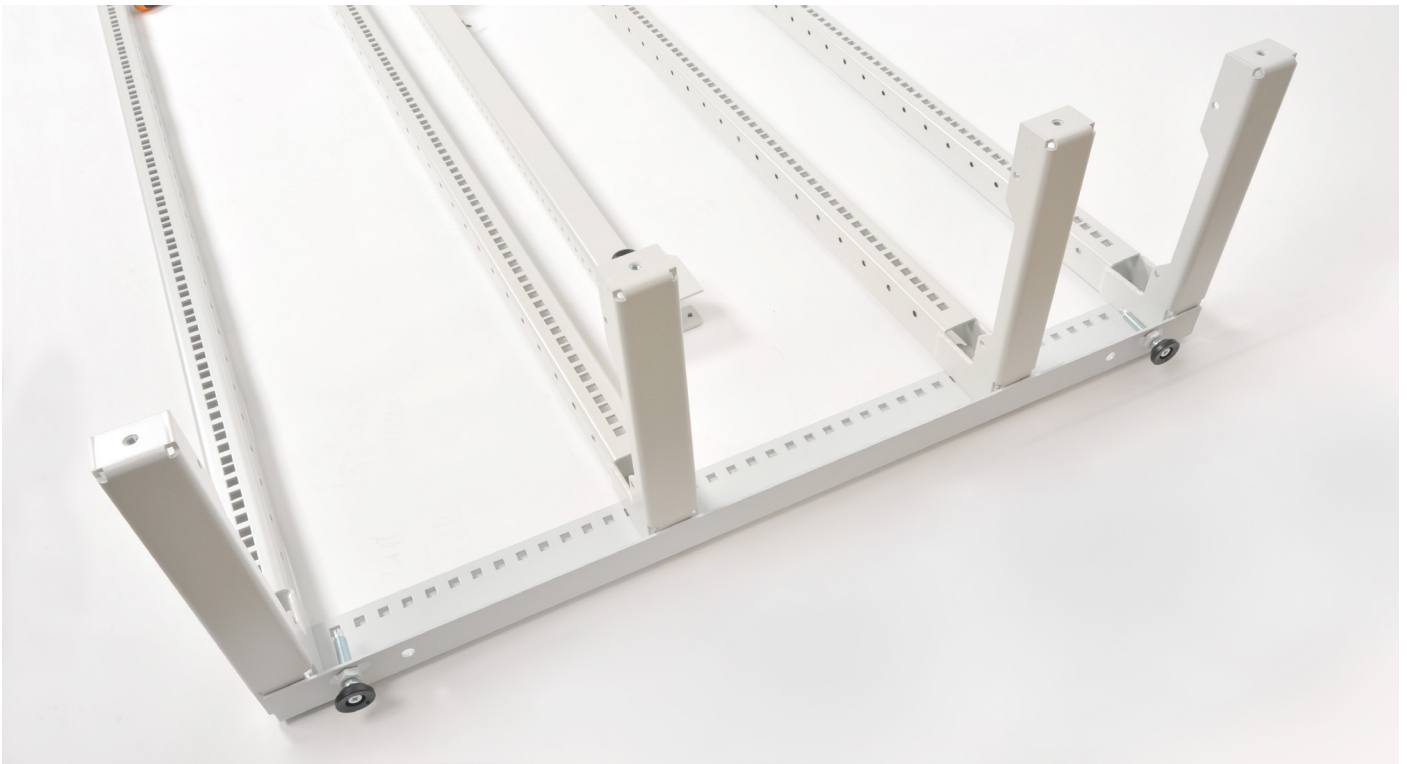


1. Centrix frame assembly

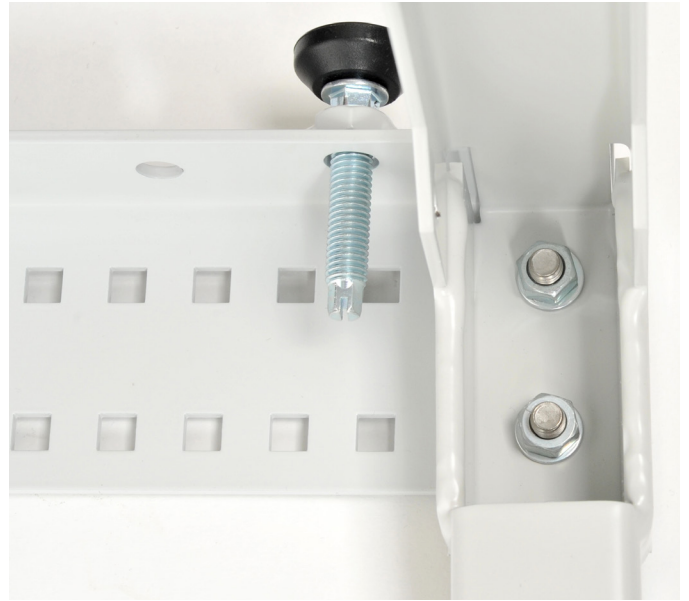
1.1 Installation kit (tools are not the scope of delivery)



1.2 Use two M8 screws for each profil connection point with vertical rack elements. Use the holes marked with the labels to determine positioning.



1.3 Using washers and nuts screw together four vertical parts with bottom profile.



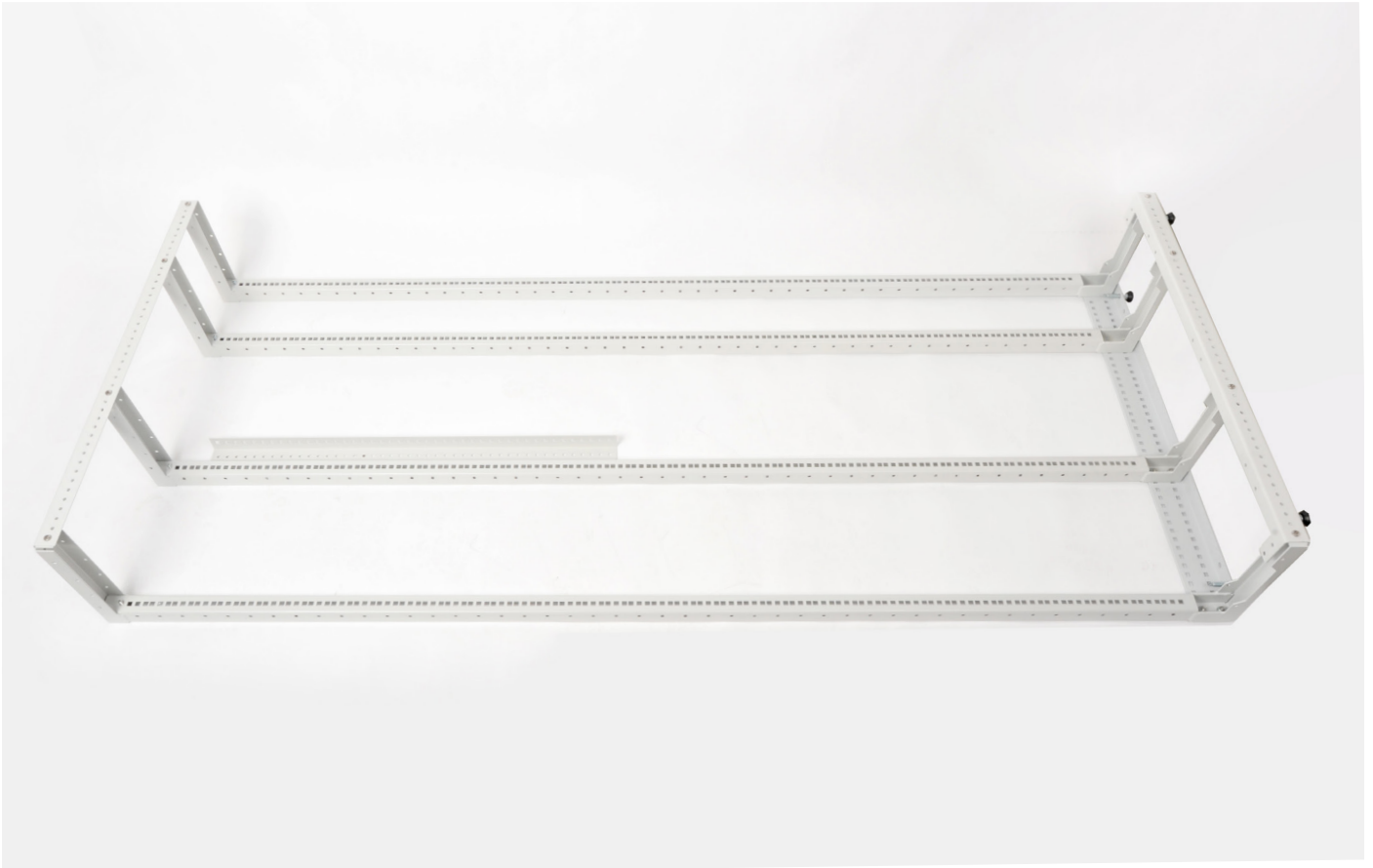
1.4 Use wrench No 13 to tighten all screws.



1.5 Screw upper profile with M6 screws, Using Philips screw driver tighten all screws.



1.6 Mount upper profile on the opposite side of the rack and tighten all screws.

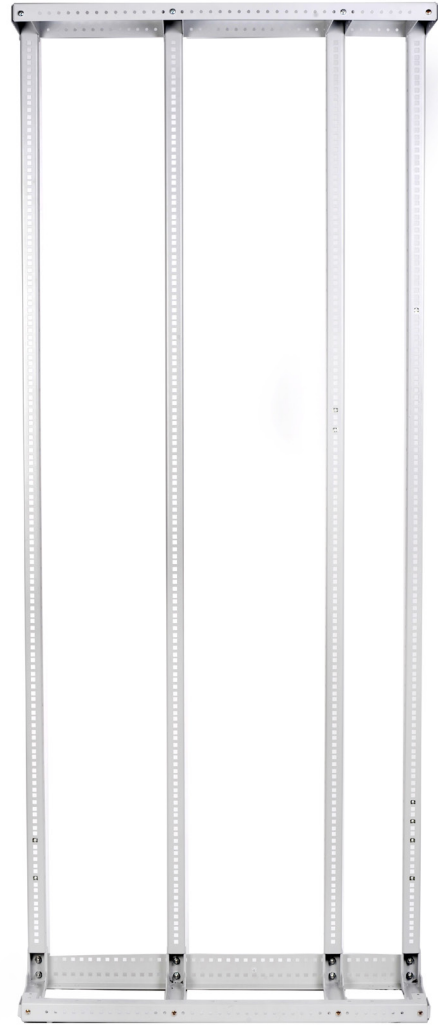


1.7 Flip the rack over and mount the remaining part, same as previous.

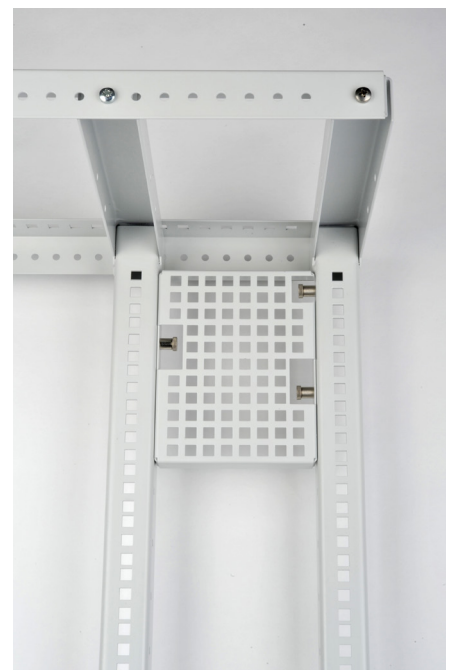
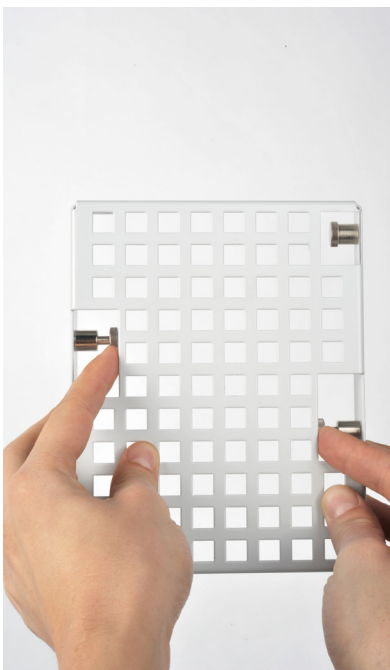


2. Backplates installation in the Centrix cabinet.

NOTE: Start instalation from top to the bottom of the frame.



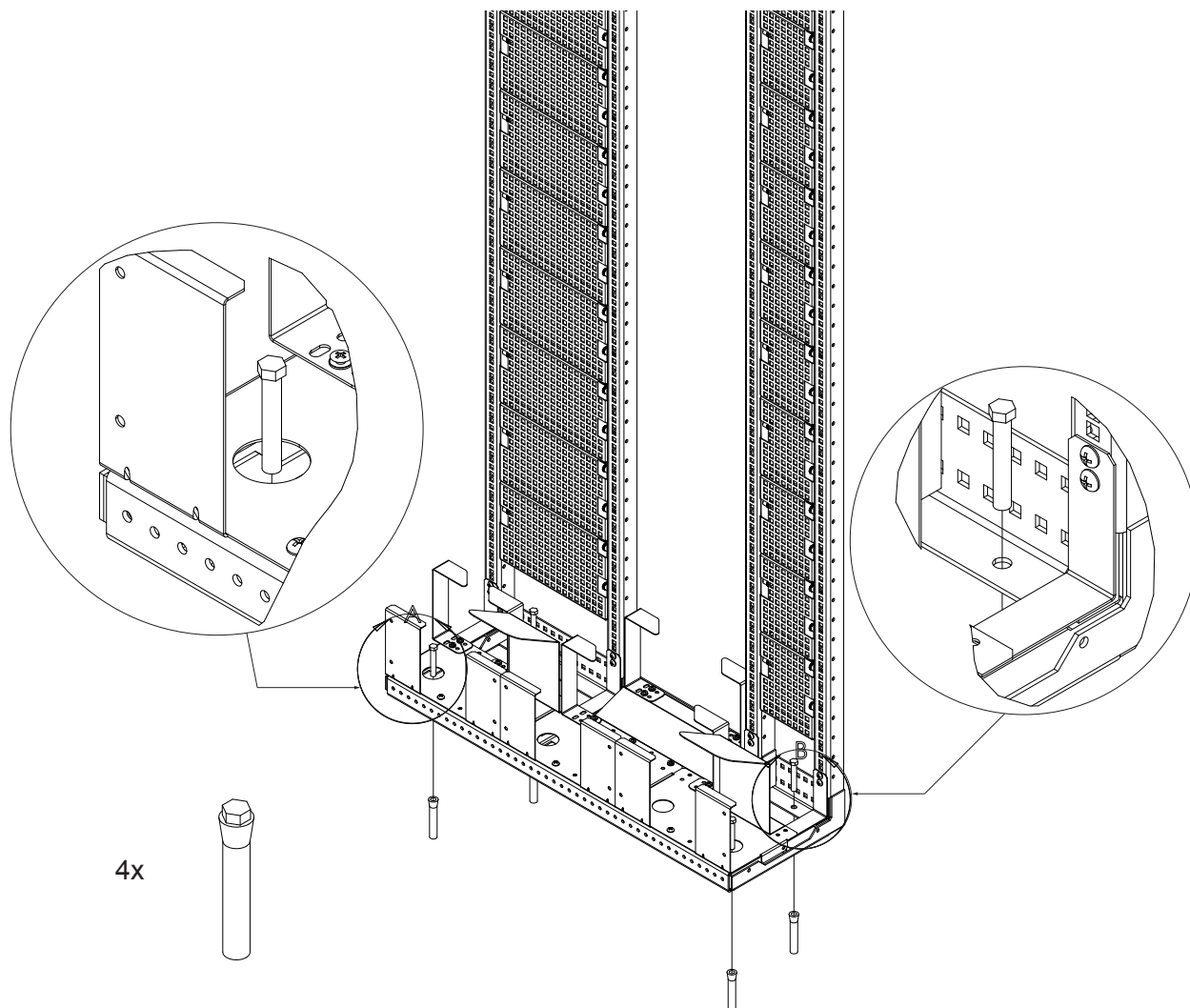
2.1 Pull the safety pins, place the mounting plate between the vertical profiles on the right or left side of the rack and release the pins to lock the position of the element.



2.2 Repeat the above steps for the other backplates.

3. Fixing cabinet to the floor

- 3.1 To determine holes position refer to Drilling Template C46166-K0009-C812.
- 3.2 Drill holes with drill size 15mm and depth 95mm.
- 3.3 Place anchors in the holes.
- 3.4 Put the cabinet to its place and align holes with anchors.
- 3.5 Fix the cabinet to the ground firmly.



4. Instalation of housings in the Centrix cabient.

- 4.1 Place two cage nuts in the proper holes in vertical frame profiles.

NOTE: Cage nuts used with Centrix cabinet are front mounting type.



4.2 Place the M6 screws in cage nuts and pre-tighten.

NOTE: Do not tighten the screws completely, leave approx. 5mm gap, according to the picture below.



4.3 To mount housing, place bolts located on the left hand side of the unit in the proper holes in the frame.



4.4 Adjust holes of the bracket with previously installed screws and slide the unit to the left.



4.5 Tighten both screws.

4.6 Repeat the above steps for the other housings.

5. Stacking patchcords hubs together.

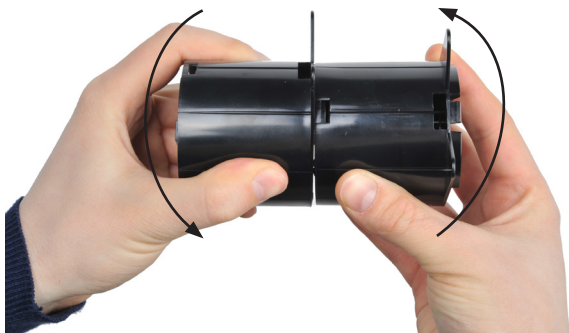
NOTE: When purchasing an assembled cabinet, cable hubs are already installed.

5.1 Take two hubs and position them at an angle of 45 degrees to each other.

NOTE: The hubs are provided as separate elements.
Depending on the cabinet configuration, hubs can be stacked on top of each other up to 4 pieces.



5.2 Connect the hubs together tightly and twist in opposite directions until a stable connection is reached. Positioning grooves should be aligned.

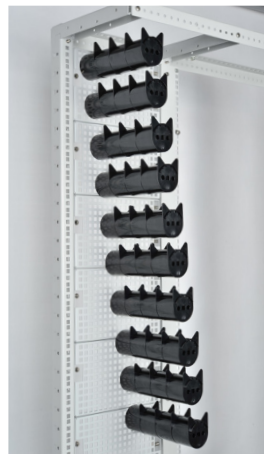


5.3 Repeat the above steps for the other patchcords hubs.



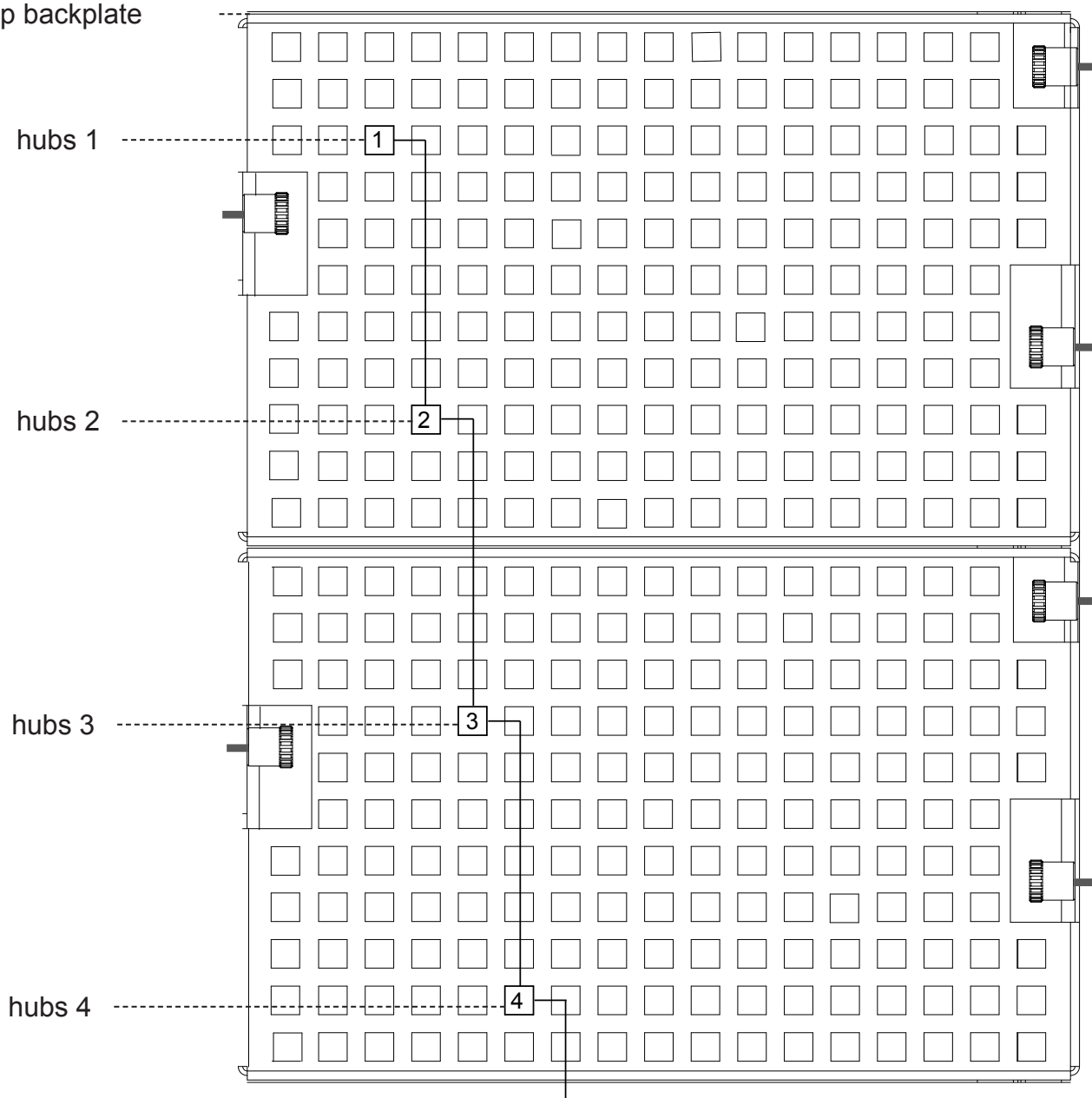
6. Patchcords hubs installation in the Centrix cabinet.

6.1 Attach stacked hubs to the mounting backplate at an angle of 45 degrees, press down and turn clockwise. Repeat for the other stacked hubs.



NOTE: Install patchcords hubs according to diagram below. The lower hubs stuck should be placed one hole to the right and 6 holes down from the above one.

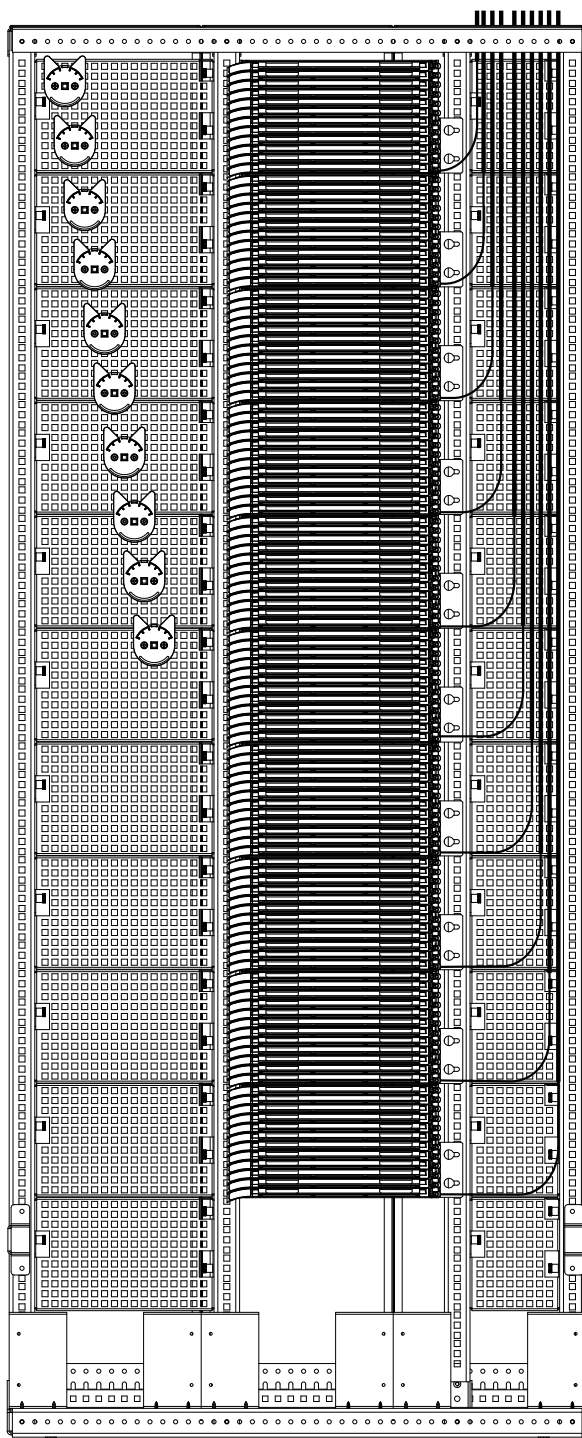
Top backplate



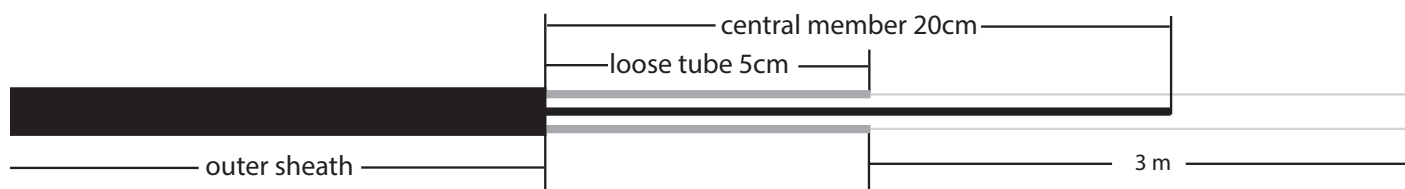
7. Feeder cables installation in the Centrix cabinet

7.1 Cable preparation.

7.1.1 Remove the cable sheath leaving the appropriate fiber lengths shown on the picture below. The fibers will be inserted in the transport tube with the shown lengths, before entering in the housing.



7.1.2 Prepare the cable according to the scheme below. Be as precise as possible.



7.1.3 Clean fibers from gel.

7.2 Cable installation

7.2.1 Position the central element catcher on the plate with a slight turn of the screw.

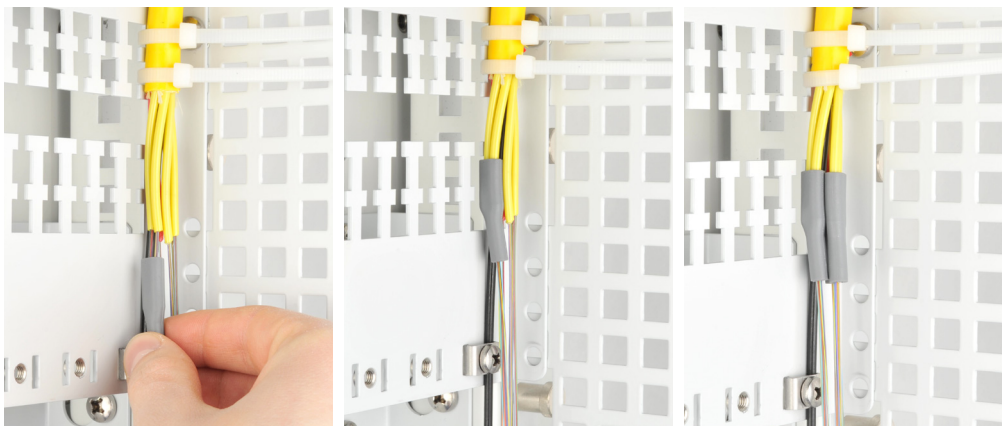
7.2.1 Slide the central member of the cable in the catcher, and fully tighten it.

7.2.1 Fix the cable to the strain relief plate using two cable ties to one of the upper T-shaped latches.

NOTE: The cable tie must be tightened on the sheath of the cable.



7.2.2 Insert the fibers through the grommet and slide the grommet on the end of loose tube. Repeat these steps for all tubes.



NOTE: Depending on the cable profile, different grommets can be used. To install proper one please refer to the table on the bottom of this page.

7.2.3 Cut the transport tube to the 200 cm length.

7.2.4 Pull fiber through the transport tube and insert it into the grommet. Repeat these steps for all cables.



	24 port cassette	36 port cassette
12f buffer tube	1-2	1-3
24f buffer tube	1-1	-
36f buffer tube	-	1-1

7.2.5 Attach the cable central element in the appropriate place. Use components from strain relief kit.

7.2.6 Attach the grommets to the strain relief plate using two cable ties.



8. Grounding of cable with metal sheath

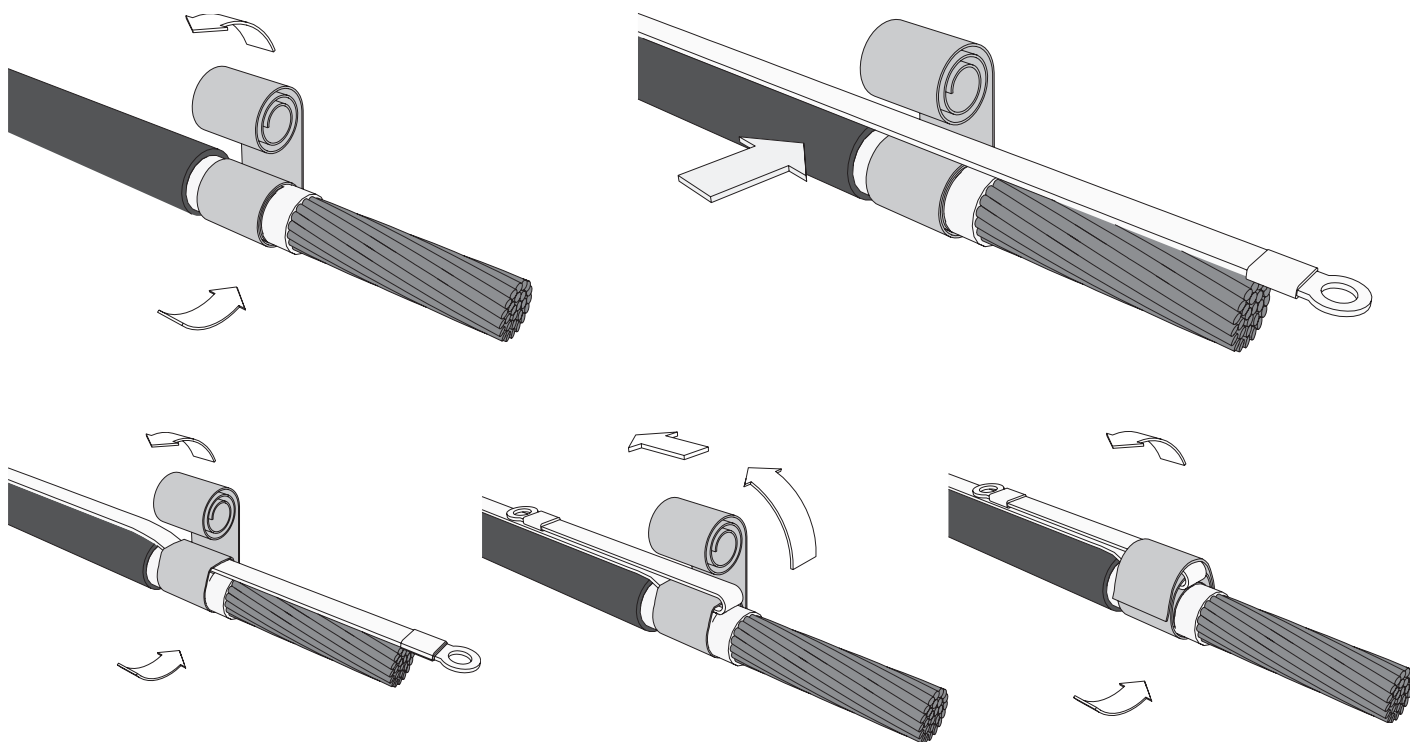
8.1 Roll two layers of the scroll spring around the shield membrane.

8.2 Place the ground connection strip with the smaller cable eyelet (M6) over the scroll spring.

8.3 Roll a further layer around the ground connection strip.

8.4 Bend back the ground connection strip over the scroll spring.

8.5 Roll the remainder of the scroll spring fully around the ground connection.

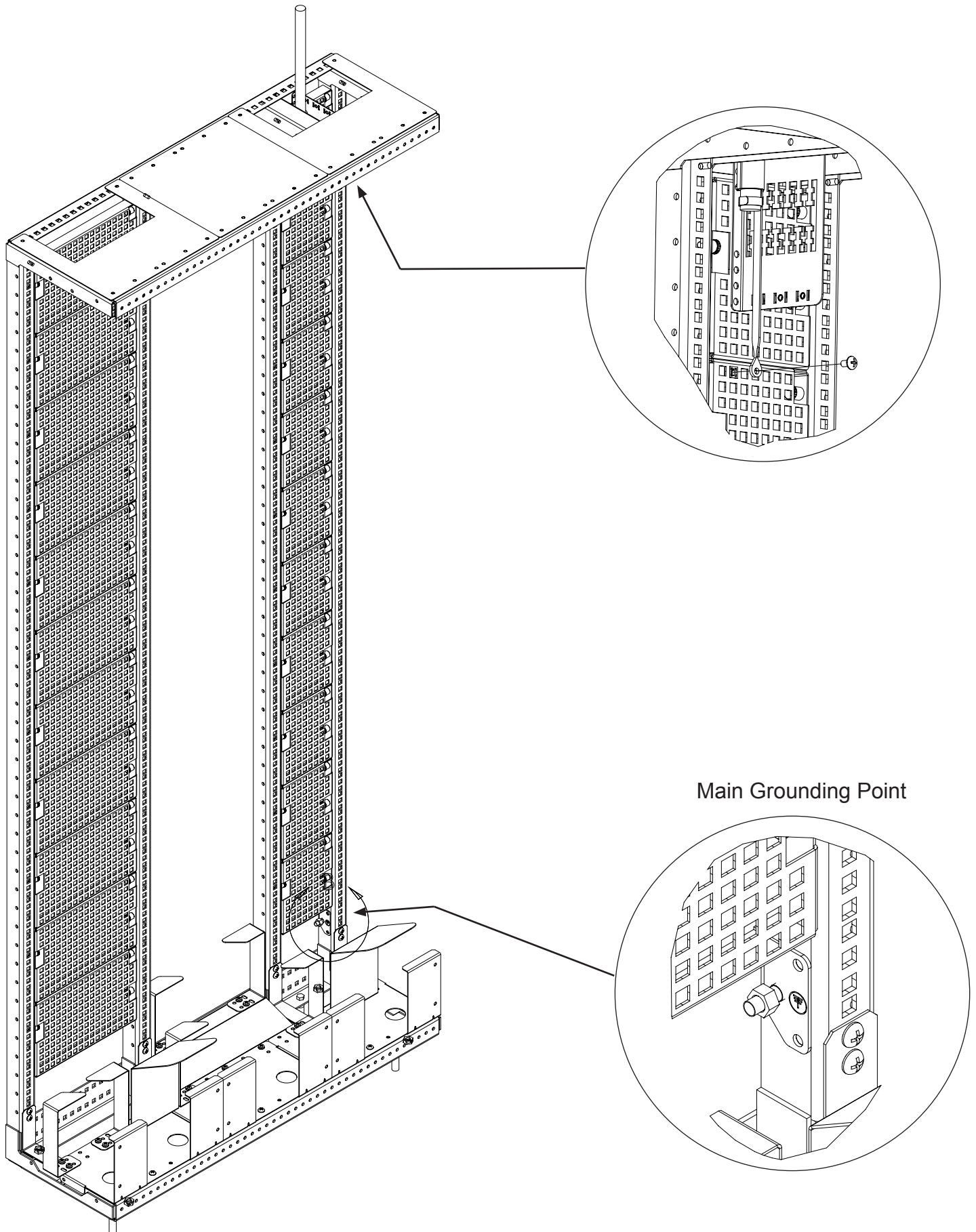


8.6 Fix cable to the strain relief plate.

8.7 Fix grounding wire of the prepared cable to chosen port on the backplate below.

8.6 Put cage nut in chosen hole on the backplate and connect grounding wire with screw.

REMARK: Main grounding point is located on the rear bottom of the cabinet.

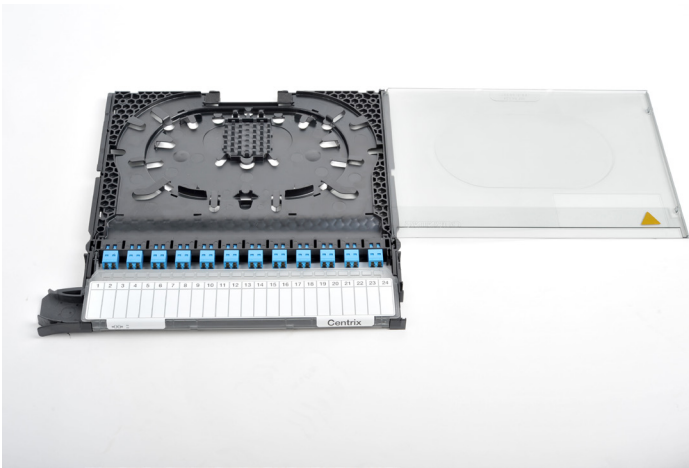


9. Guiding of transport tubes containing optical fibers to a cassette.

9.1 Pull out the cassette to be populated out of the housing and place it on the splicing table.

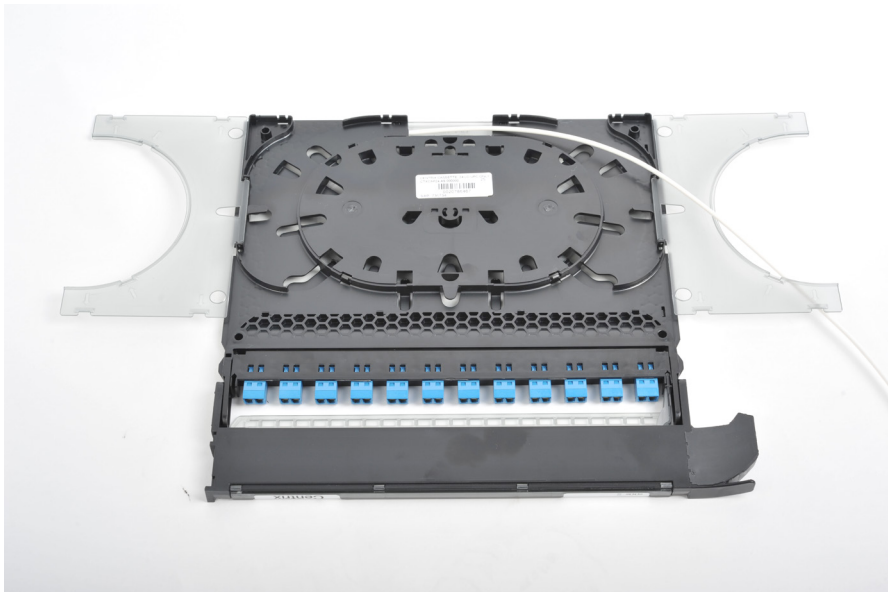


9.2 Open the cassette top cover and attach the end of the transport tube into the right cassette entry.

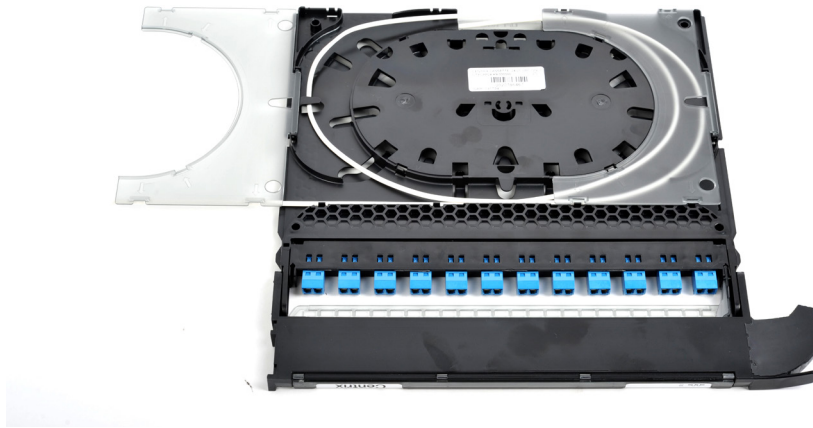


9.3 Prepare fibers and splice with pigtails. Detailed routing manual: 003-949

9.4 Close the top cover, flip the cassette and open the bottom cover.



9.5 Wrap approx. 1.5m transport tube at the bottom of cassette storage space and guide tube outside the cassette as shown in the picture.



9.6 Close the cover and slide the cassette back into the housing.



9.7 Guide the transport tube into plastic cable guides.

9.8 Repeat the above steps for other cassettes.



10. Patchcords management

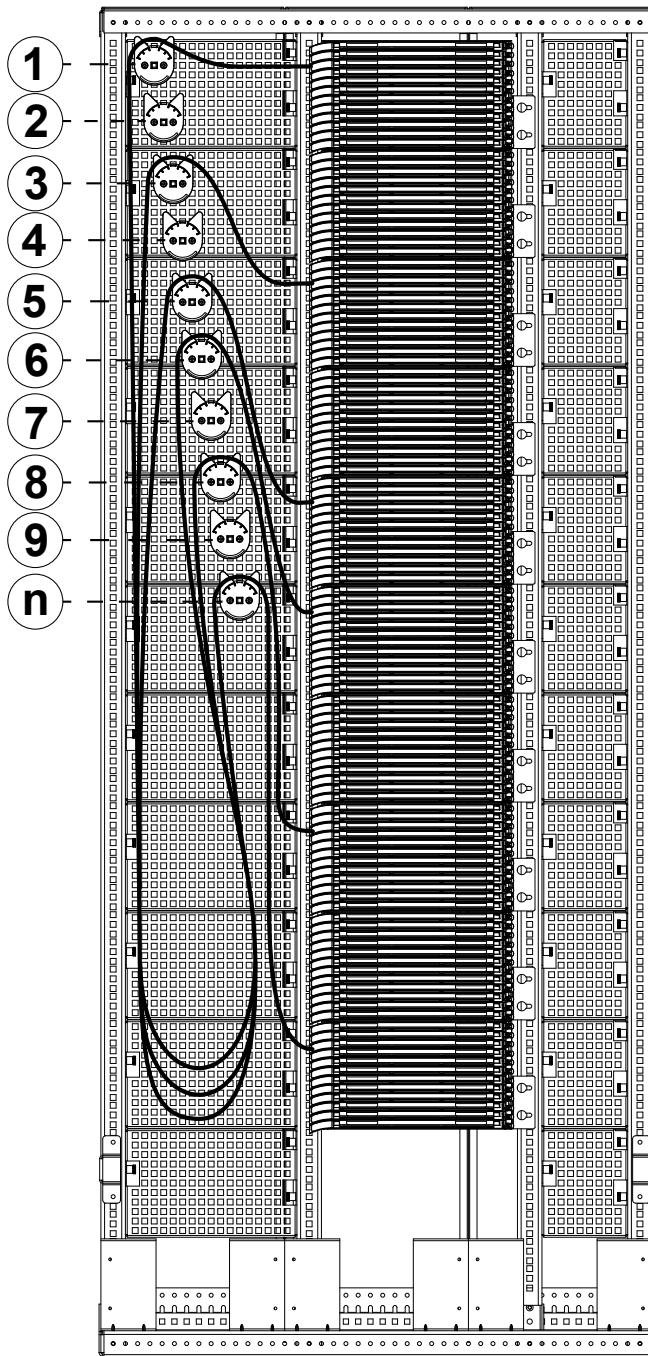
NOTE: Depending on the configuration and application of the Centrix cabinet, follow one of the following schemes presented below.

10.1 Patching inside the cabinet

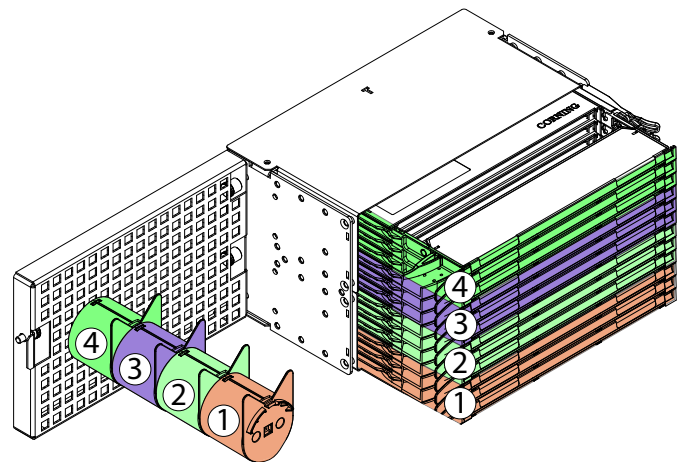
NOTE: To connect any two ports in a cabinet, use a 4m patchcord.

1. Connect both ends of the patch cord to the selected ports in the frame.
2. The excess patch cord length precipitates on proper cable hubs according to the proposed scheme.

The excess length of patchcords must be spread out hanging patchcords on the hubs, according to the presented scheme.



NOTE: Route patchcords from the cassettes to cable hubs according to the diagram below.



Disposal Note

Disposal of the products and their packaging must be carried out in strict compliance with the local laws currently in force.

Disclaimer

Corning Optical Communications Sp. z o.o. accepts no liability for any damage arising from improper use of the product.

The extent of any liability in specific instances shall be limited to the General Terms and Conditions of Sale from Corning Optical Communications Sp. z o.o.

This product is state of the art.

Corning Optical Communication Sp. z o.o.

© Corning Optical Communications Sp. z o.o.
Smolice 1E, 95-010 Stryków - Poland
Phone + 48-42 230 11 00 Fax: +48-42 230 11 01
Internet: www.corning.com/opcomm/emea

Printed in the European Union on oxygen-bleached paper.
Subject to availability. Right of modification reserved.

Order No.: S46998-A0005-P945
01.06.2015